

MX-AB080-H1 V2 802.11a/b/g/n/ac Wireless Dual-Band Motherboard

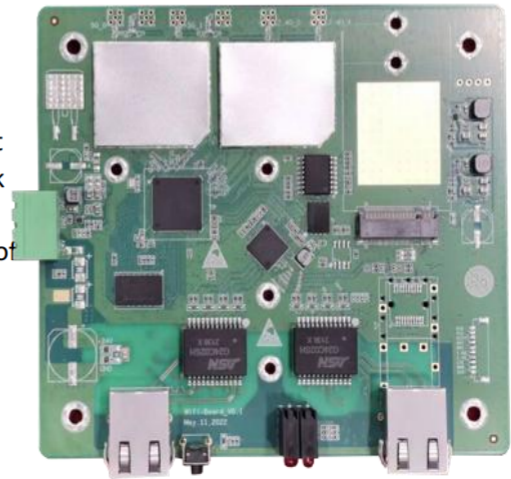
Description

MX-AB080-H1 V2 802.11a/b/g/n/ac Wireless Dual-Band Motherboard is a dual-band wireless AP with a maximum rate of 1167Mbps and the max accesses user can reach 512, be able to optimize the use of bandwidth and online speed.

It supports multiple working modes of AP/Client, meets different application requirements be flexibly applied to different network access plans.

support wireless positioning function to meet the requirements of underground pipelines, factories, industrial parks and related areas for smart wireless coverage. With the automatic detection and seamless switching tech to ensure users can enjoy the feelingless roaming under the signal coverage.

The product has PCIE Ethernet ports which can integrate IoT modules. A variety of power supply methods, DC 24V power supply (3pin 5.08 terminal) or POE 48V power supply; LAN port can support Ethernet ports or fibre ports.



Specification

HARDWARE	Size	120x115mm
	Power supply	48V POE+
	Maximum power consumption (W)	12W
	Average power consumption (W)	9W
	Processor	IPQ4028
	Memory	256MB DDR3L, 32MB Flash
	Expansion connector	Mini PCIe
	Network connector	2*10/100/1000Mbps, compatible with SFP
	LED	6xLED
	Maximum transmit power	2.4G: 25dBm; 5G: 24dBm
	Working temperature	-20°C~70°C / -4 ~ 158°F
	Storage temperature	-40°C~90°C/ -40 ~ 130°F
	Working humidity	5%~95%RH non-condensing

MAXON

Link Of Your Think

Nanjing MAXON O.E. TECH. CO., LTD

TEL: 86-25-86380932

WEB: www.mxcomm.cn

E-MAIL: info@maxonc.com

Nanjing MAXON O.E. TECH. CO., LTD

Add: 6/F, Building A3, Zidong International Creative Park, Zidong Road, Qixia District, Nanjing, China.

SOFTWARE	protocol	802.11 a/b/g/n/ac
	Frequency range	2.4G: 2412~2472MHz (China) 2412~2462MHz (US) 2412~2472MHz (most ROW Countries/Regions)
	(*The frequencies need to be supported by a specific version)	5G: 5180~5320MHz, 5745~5825MHz (China) 5180~5320MHz, 5500~5720MHz, 5745~5825MHz (USA) 5160~5340MHz, 5480~5720MHz, 5745~5865MHz (India) 5160~5340MHz 5480~5720MHz 5745~5825MHz
	Working Mode	Access Point, Client, WDS Access Point, WDS Client
	Security	WPA2-PSK, Hidden SSID, IP/MAC Filtering
	Network Mode	Bridge/Router
	Configuration	support web configuration, support AC remote management, support SNMP management
	Others	Scheduled restart, VLAN support, QoS, Watchdog

Radio Frequency Parameters

TRANSMIT POWER				RECEIVE SENSITIVITY		
	RATE	POWER	TOLERANCE	RATE	POWER	TOLERANCE
11b/g/n	1 Mbps	22dBm	+/- 2dBm	1 Mbps	-93dBm	+/- 2dBm
	11 Mbps	22dBm	+/- 2dBm	11 Mbps	-86dBm	+/- 2dBm
	6 Mbps	22dBm	+/- 2dBm	6 Mbps	-88dBm	+/- 2dBm
	54 Mbps	19dBm	+/- 2dBm	54 Mbps	-70dBm	+/- 2dBm
	HT20 MCS0 (Joint Chain)	25dBm	+/- 2dBm	HT20 MCS0	-88dBm	+/- 2dBm
	HT20 MCS7 (Joint Chain)	21dBm	+/- 2dBm	HT20 MCS7	-68dBm	+/- 2dBm
	HT40 MCS0 (Joint Chain)	25dBm	+/- 2dBm	HT40 MCS0	-86dBm	+/- 2dBm
	HT40 MCS7 (Joint Chain)	21dBm	+/- 2dBm	HT40 MCS7	-65dBm	+/- 2dBm

MAXON

Link Of Your Think

Nanjing MAXON O.E. TECH. CO., LTD

TEL: 86-25-86380932

WEB: www.mxcomm.cn

E-MAIL: info@maxonc.com

Nanjing MAXON O.E. TECH. CO., LTD

Add: 6/F, Building A3, Zidong International Creative Park, Zidong Road, Qixia District, Nanjing, China.

TRANSMIT POWER				RECEIVE SENSITIVITY		
	RATE	POWER	TOLERANCE	RATE	POWER	TOLERANCE
11a/n	6 Mbps	21dBm	+/- 2dBm	6 Mbps	-88dBm	+/- 2dBm
	54 Mbps	18dBm	+/- 2dBm	54 Mbps	-70dBm	+/- 2dBm
	HT20 MCS0 (Joint Chain)	24dBm	+/- 2dBm	HT20 MCS0	-88dBm	+/- 2dBm
	HT20 MCS7 (Joint Chain)	20dBm	+/- 2dBm	HT20 MCS7	-67dBm	+/- 2dBm
	HT40 MCS0 (Joint Chain)	24dBm	+/- 2dBm	HT40 MCS0	-85dBm	+/- 2dBm
	HT40 MCS7 (Joint Chain)	20dBm	+/- 2dBm	HT40 MCS7	-65dBm	+/- 2dBm
11ac	VHT20 MCS0 (Joint Chain)	24dBm	+/- 2dBm	VHT20 MCS0	-88dBm	+/- 2dBm
	VHT20 MCS8 (Joint Chain)	19dBm	+/- 2dBm	VHT20 MCS8	-64dBm	+/- 2dBm
	VHT40 MCS0 (Joint Chain)	24dBm	+/- 2dBm	VHT40 MCS0	-84dBm	+/- 2dBm
	VHT40 MCS9 (Joint Chain)	18dBm	+/- 2dBm	VHT40 MCS9	-61dBm	+/- 2dBm
	VHT80 MCS0 (Joint Chain)	24dBm	+/- 2dBm	VHT80 MCS0	-82dBm	+/- 2dBm
	VHT80 MCS9 (Joint Chain)	18dBm	+/- 2dBm	VHT80 MCS9	-57dBm	+/- 2dBm
*The joint chain in the above table is tested by single chain +3dB						

MAXON

Link Of Your Think

Nanjing MAXON O.E. TECH. CO., LTD

TEL: 86-25-86380932

WEB: www.mxcomm.cn

E-MAIL: info@maxonc.com